

# V952 Double regulating valve



## specification

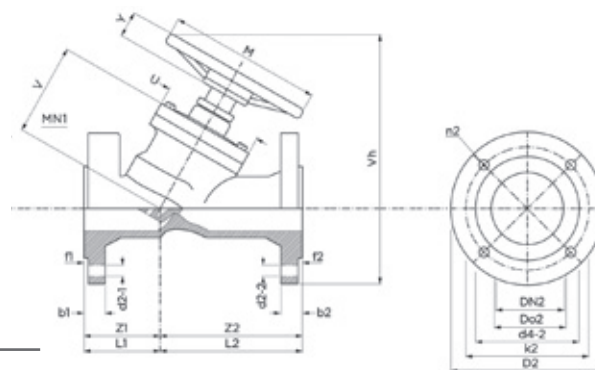
- all sizes PN16
- ductile iron double regulating valve with regulating and isolating functions (DRV and VODRV)
- ductile iron body
- flanged to EN1092-2

DN	Connection	Code	Total (kg)
DN65	2 1/2"	15531	18.0
DN80	3"	15532	24.0
DN100	4"	15533	30.0
DN125	5"	15534	45.0
DN150	6"	15535	52.0
DN200	8"	15536	105.0
DN250	10"	15537	185.0
DN300	12"	15538	248.0

### Flow rates kv values m³/h

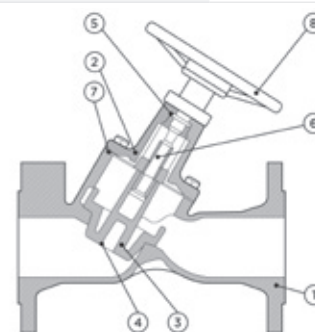
Range*	DN65	DN80	DN100	DN125	DN150	DN200	DN250	DN300
1	18.6	13.3	23.6	32.2	48.0	41.0	97.0	63.0
2	26.8	20.0	36.6	55.6	75.0	61.0	146.0	113.0
3	35.4	24.1	48.5	68.8	110.0	81.0	177.0	174.0
4	38.7	34.9	55.2	98.0	162.0	99.0	232.0	245.0
5	49.4	45.9	75.2	145.7	233.0	161.0	368.0	397.0
6	65.5	71.6	97.9	199.1	294.0	215.0	543.0	628.0
7	74.6	98.8	123.9	231.7	346.0	271.0	695.0	792.0
8	80.2	113.7	149.4	260.5	371.0	339.0	832.0	873.0
9						412.0	960.0	1002.0
10						482.0	1045.0	1112.0
11						546.0	1151.0	1223.0
12							1248.0	1331.0
13							1292.0	1383.0
14								1444.0
15								1505.0
16								1639.0
17								1707.0
18								1730.0
Fully open	83.8	119.5	178.7	272.7	380.0	608.0	1360.0	1791.0

\*Number of rotations for closed to fully open



### Material specification

Nr	Component	Material
1	Body	Ductile iron
2	Bonnet	Ductile iron
3	Disc, EPDM coated	Ductile iron
4	Disc nail	Brass
5	"O" ring	EPDM
6	Stem	Stainless steel
7	Gasket	Graphite
8	Handwheel	Carbon steel (DN50 - DN100) Ductile iron (DN125 - DN300)



### Dimensions (mm)

	b1/b2	d4-1/d4-2	D1/D2	DN1/DN2	f1/f2	K1/K2	L1/L2	M	n1/n2	U	V	Vh	Y	Z1/Z2
DN65	20.0	118.0	185.0	DN65	3.0	145.0	145.0	154.0	4.0	124.0	153.0	386.0	15.0	145.0
DN80	22.0	132.0	200.0	DN80	3.0	160.0	155.0	173.0	8.0	143.0	174.0	405.0	15.0	155.0
DN100	24.0	156.0	220.0	DN100	3.0	180.0	175.0	198.0	8.0	168.0	203.0	433.0	15.0	175.0
DN125	26.0	184.0	250.0	DN125	3.0	210.0	200.0	229.0	8.0	199.0	238.0	478.0	15.0	200.0
DN150	26.0	211.0	285.0	DN150	3.0	240.0	240.0	261.0	8.0	231.0	274.0	531.0	15.0	240.0
DN200	30.0	266.0	340.0	DN200	3.0	295.0	300.0	324.0	12.0	294.0	345.0	623.0	15.0	300.0
DN250	30.0	319.0	405.0	DN250	3.0	355.0	365.0	388.0	12.0	358.0	417.0	773.0	15.0	365.0
DN300	30.0	370.0	460.0	DN300	3.0	410.0	425.0	451.0	12.0	421.0	488.0	920.0	15.0	425.0

### Maximum pressure conditions

Size	Max Pressure (bar)	Min/Max Temperature (°C)	Test Pressure Shell (bar)	Test Pressure Seat (bar)	Max Pressure (psi)	Min/Max Temperature (°F)	Test Pressure Shell (psi)	Test Pressure Seat (psi)
DN65 to DN300	16.0	- 10°C + 120°C	24.0	17.5	232.1	14°F + 248°F	348.0	353.5

Pressure equipment directive category

All sizes classified SEP